

Math Study Guide- Assessment Friday, December 16

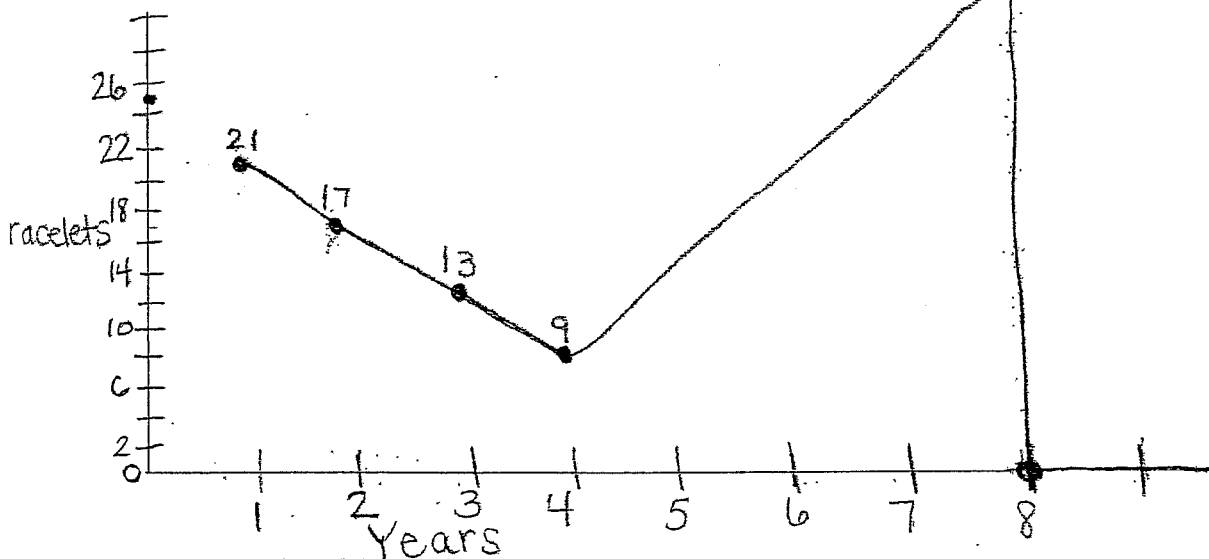
- Be able to plot ordered pairs on a coordinate grid. Practice this by playing Battleship or Sink the Sir with someone. Also, be able to identify ordered pairs on a grid. Refer to your notebook for examples.
- Know the "key vocabulary" for coordinate grids (x-axis, y-axis, quadrants, origin, ordered pairs).
- Review the "Get to the Point" song you glued in your notebook.
- Understand function tables (input/output machines) and be able to identify the rule and equation. For example:

| x | y |
|----|----|
| 4 | 17 |
| 15 | 50 |
| 8 | 29 |

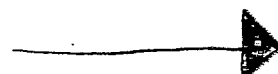
Rule: times 3 plus 5 ($x \cdot 3 + 5$) Equation: $3x + 5 = y$

- By looking at a line graph, be able to identify the ordered pairs and create a function table and identify the equation.
- Review "Landon and Sam" problem.
- Know and understand the math vocabulary we use to describe graphs (These are in your notebook.)
- Understand constant change vs. varied change. What do these graphs look like?
- Read scenarios and be able to create a line graph, using key vocabulary, based on that scenario. For example:

Kelsey's mom bought her 25 bracelets because Kelsey wanted to give birthday presents to her friends. So, in year one, Kelsey gave away 4 bracelets. Then, she continued to give out her bracelets at a constant pace until she had 9 bracelets left, in year 4. She asked her mom to buy her more, so her collection of bracelets rose quickly until year 8. By this time, Kelsey was tired of having so many bracelets; she decided to give all of them to her little sister.

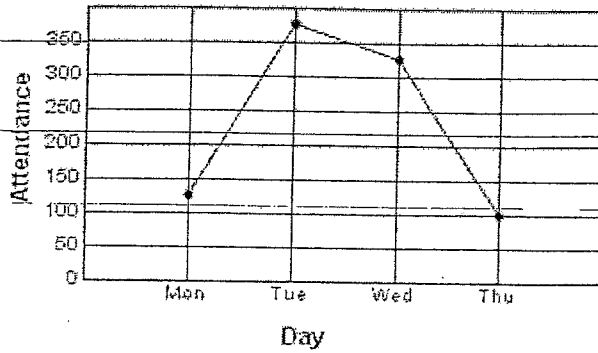


There are examples of these in your math folder.



- By looking at a line graph, be able to identify the changes that occur by using math vocabulary. For example:

School Play Attendance



By looking at the line graph I see that from Monday to Tuesday the school play attendance increased at a rapid pace from 125 people to 375 people. Then from Tuesday to Wednesday the attendance count dropped slightly from 375 to 325 people. Finally by Thursday the attendance had a sharp decrease in numbers and there were only 100 people there.

- By looking at two or three line graphs, be able to compare and contrast the relationship between them.