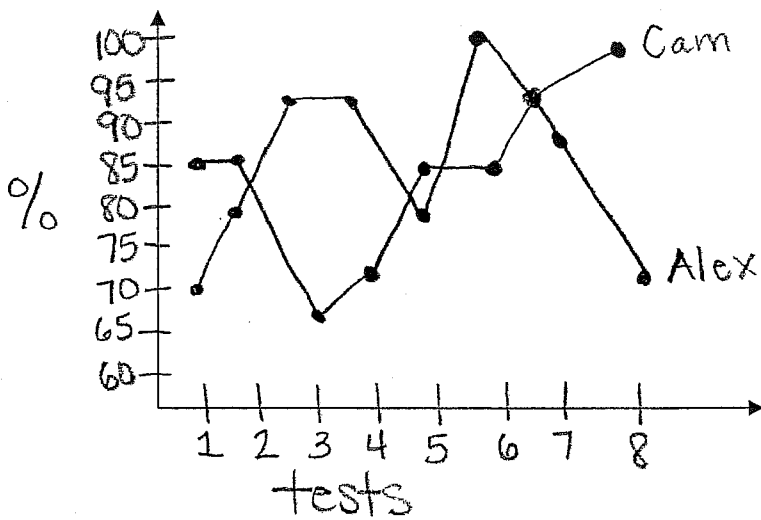
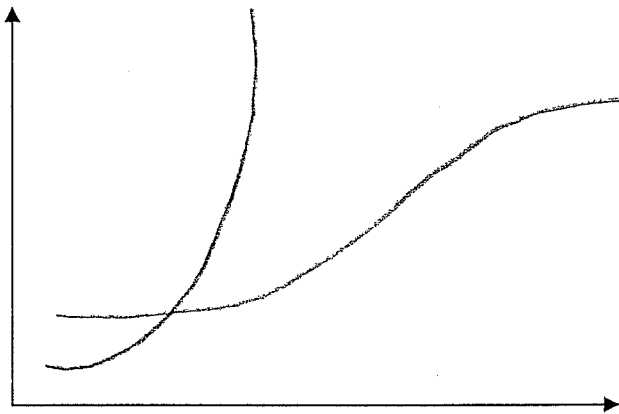


### Scores on tests

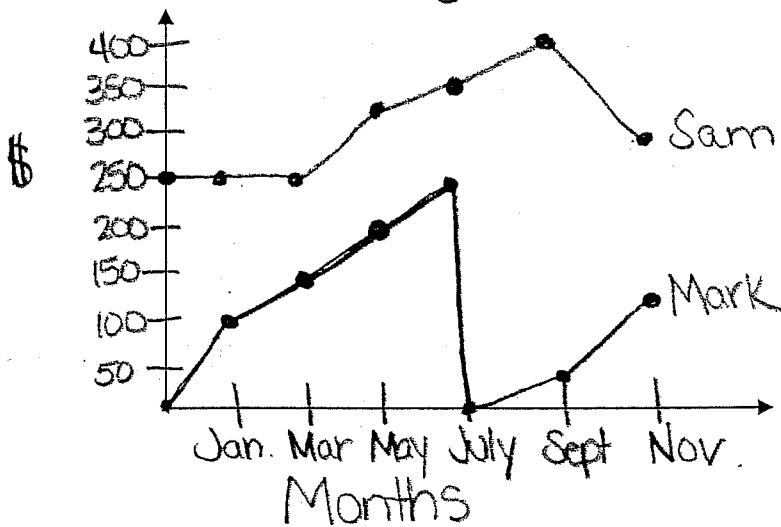


What is the relationship between Cam's scores on the tests and Alex's scores?

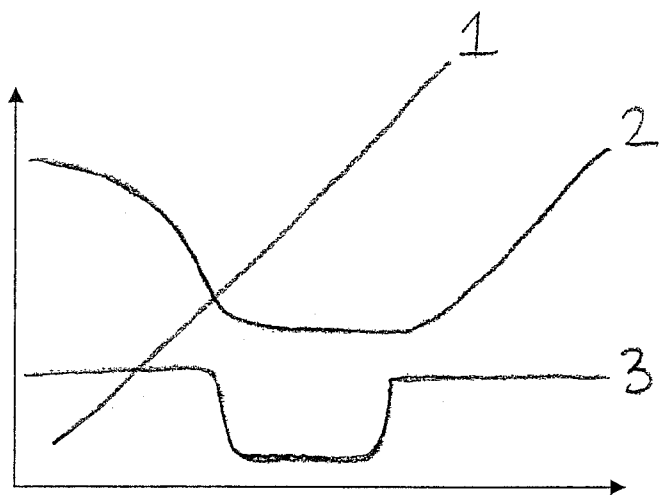
Describe the relationship between the two graphs.



### Money Saved

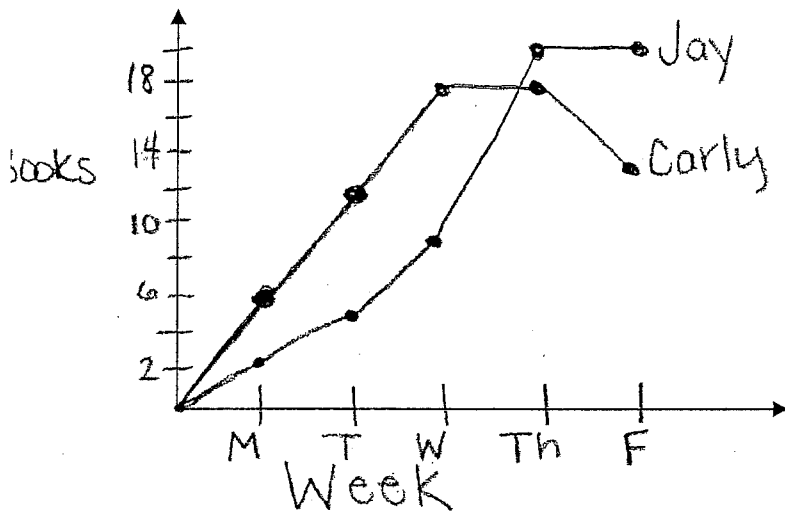


Describe the relationship between Sam and Mark and the money they saved.



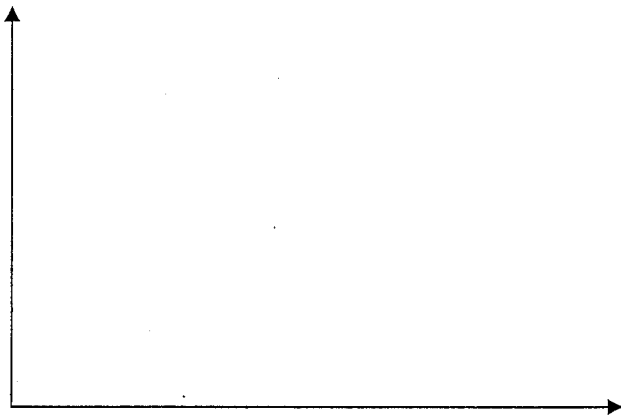
Compare the 3 line graphs using mathematical language

### Book Drive



Create a scenario comparing Jay's book drive collection vs. Carly's collection.

Draw the following graphs:



1) It started out increasing at a slow, steady pace. Then there was a sharp drop. Finally it evened out and remained constant.

2) It started out decreasing quickly and then began rising at a constant pace. Finally it dropped at a steady pace.